

A SUB-COLLECTION OF

Brera

COLLECTION

# Brera Cafè

*The Cosy Milan*



**STELLINI**

Italian Style In Ticking Since 1947

**CT NASSAU**

Tape, Woven and Knit Ticking



# STELLINI

Italian Style In Ticking Since 1947

# CT<sup>®</sup> NASSAU

Tape, Woven and Knit Ticking

Copyright — ©Stellinigroup 2023  
All rights reserved. No part of this document may  
be reproduced without prior written permission.

WELCOME TO

# Brera Cafè

*The Cosy Milan*

[stellinigroup.com](http://stellinigroup.com) | [ctnassau.com](http://ctnassau.com)

# A Journey Through Milan Brera District

In our exploration of Brera District, our journey takes us to Brera Botanical Garden: a quiet and tiny haven where a multitude of plants and flowers are carefully kept. We sit in the caffè nearby and take a breath in the cold morning air of Milan city.





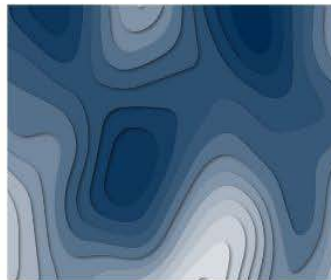
## **THE CONCEPT BEHIND BRERA CAFE SUB-COLLECTION**

The “Brera Cafè” collection embraces new designs with botanical inspirations: flowers, plants and colourful proposals. Geometries of bicolors cover tiles-like forms. Graphic and precise designs recall wallpapers of Milan’s trendy cafès, using a palette of grays, neutrals and cold tones.

**Brera Cafè is a sub-collection of  
Stellini Group’s Brera Collection.  
Discover our collection on  
[stellinigroup.com](https://stellinigroup.com)**

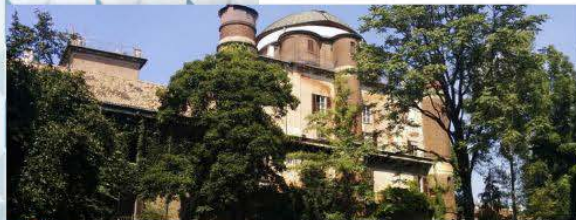
## **ABOUT THE INFLUENCES**

The Brera Collection pays homage to the 1970s Italian design sensibility, offering a fusion of vibrant hues and captivating patterns that defined the era. With a nod to the exuberant spirit of Milan’s Brera District, known for its artistry and creativity, these fabrics invite you to embark on a journey through an era that celebrates both flair and sophistication.



# Brera Cafè

*the Cosy Milan*



# WATCH

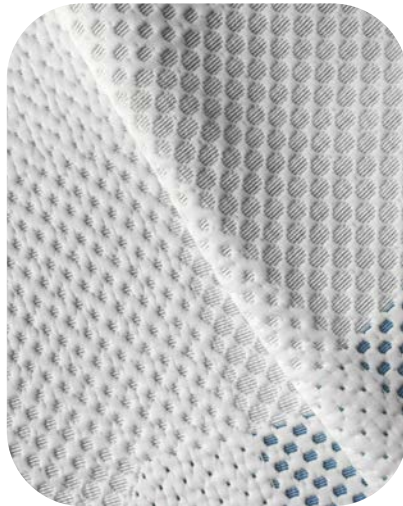
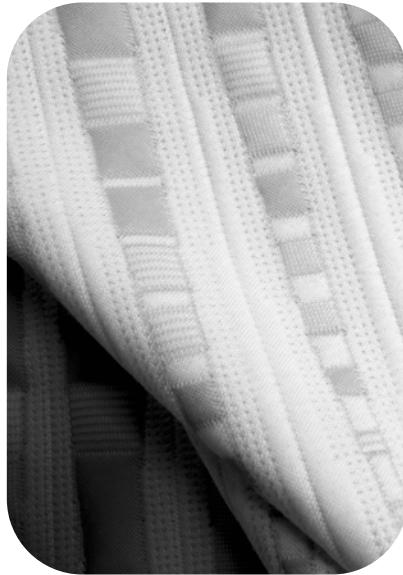
Our video trailer here:



# PREVIEWS







# COLORS SELECTION

## KNIT

Dyed



## JACQUARD



Soft neutrals and enveloping creams convey warmth and comfort, while touches of organic greens and dark contrasts add depth to the mattress.

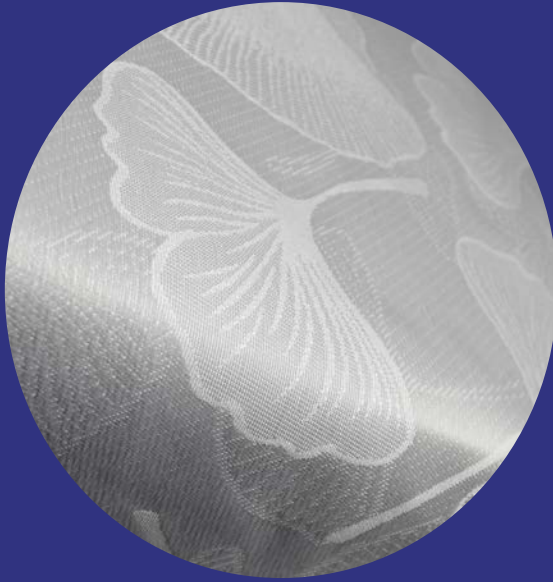
Lucid



## KEY FOCUSES

VINTAGE CLAMOUR  
& RETRO FUTURISM  
SUSTAINABLE DEVELOPMENTS  
TECHNICAL DEVELOPMENTS

# Design Previews





# Design District

**JACQUARD FABRICS**



p6007 3-0



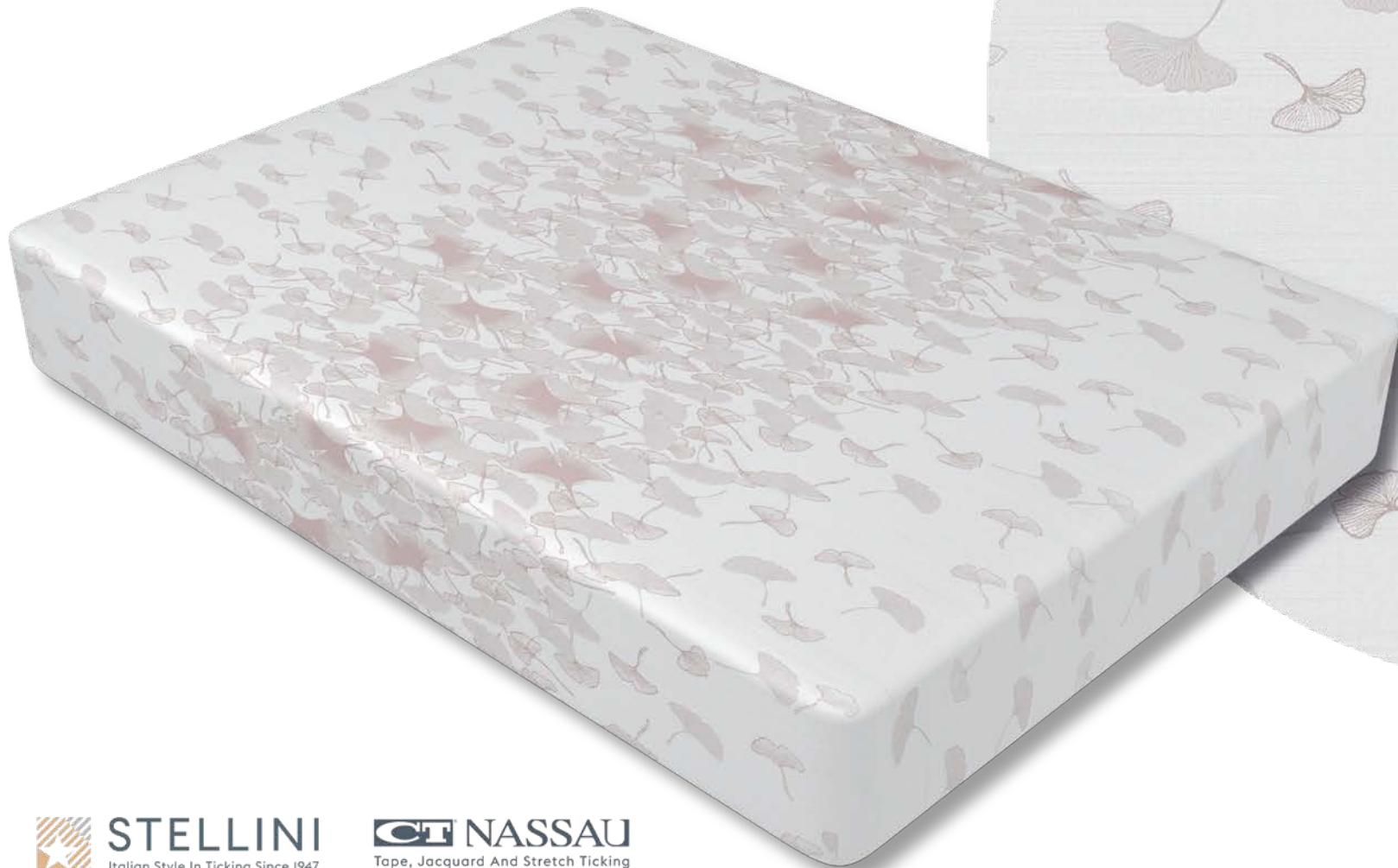
p6007 4-0



p6066dg 4-6



MATRESS PANEL - Dg24190  
p6066DG-8-8



**STELLINI**  
Italian Style In Ticking Since 1947



**NASSAU**  
Tape, Jacquard And Stretch Ticking

[stellinigroup.com](http://stellinigroup.com)

[ctnassau.com](http://ctnassau.com)

MATRESS PANEL - Dg24189

p5833DG-18-0



**STELLINI**  
Italian Style In Ticking Since 1947



**NASSAU**  
Tape, Jacquard And Stretch Ticking

[stellinigroup.com](http://stellinigroup.com)

[ctnassau.com](http://ctnassau.com)



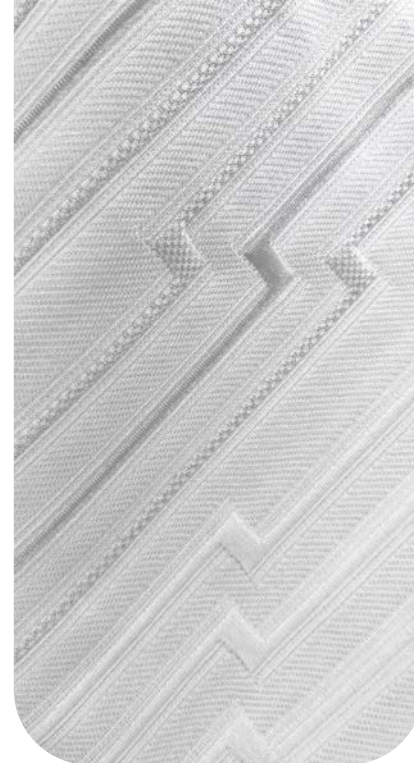
# Design District

**KNITTED FABRICS**





wk4pescv300b230 3-6



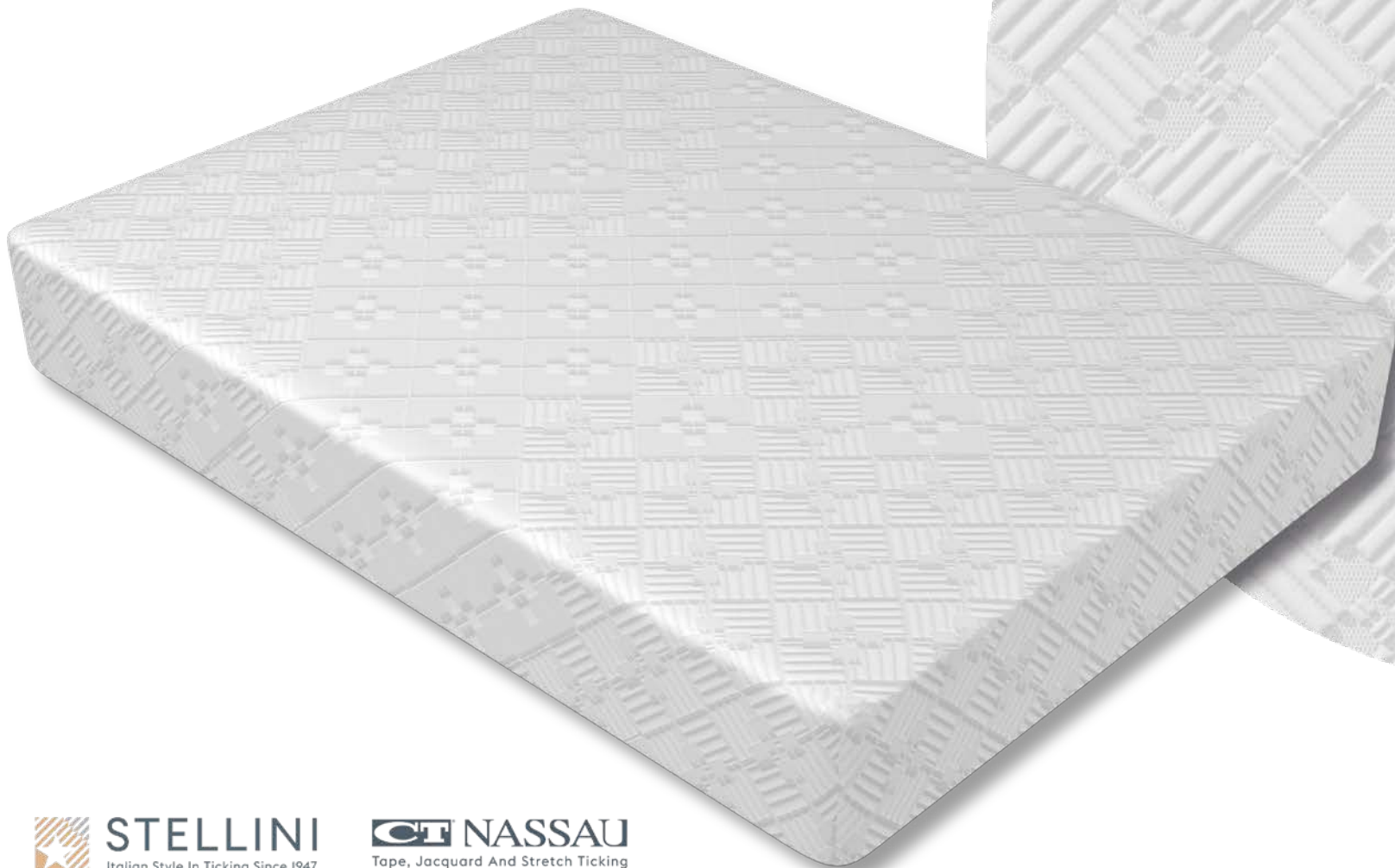
wk4pescv300b230 1-6



MATRESS PANEL - Ma10152  
pl240b220 - 7-1



MATRESS PANEL - Ma10155  
pesel3d400a230 - 8-0



**STELLINI**  
Italian Style In Ticking Since 1947



**NASSAU**  
Tape, Jacquard And Stretch Ticking

[stellinigroup.com](http://stellinigroup.com)

[ctnassau.com](http://ctnassau.com)

MATRESS PANEL - Ma10142  
pes300h230 - 53-5



**STELLINI**  
Italian Style In Ticking Since 1947



**NASSAU**  
Tape, Jacquard And Stretch Ticking

[stellinigroup.com](http://stellinigroup.com)

[ctnassau.com](http://ctnassau.com)

MATRESS PANEL - us2565b Brady  
999-0



**STELLINI**  
Italian Style In Ticking Since 1947



**NASSAU**  
Tape, Jacquard And Stretch Ticking

[stellinigroup.com](http://stellinigroup.com)

[ctnassau.com](http://ctnassau.com)

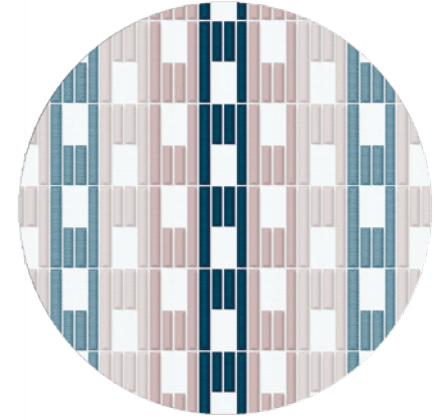


# Geometric combinations

Matching Mattress Panels and Borders  
with colourful fantasies



MATRESS PANEL - Me10146  
E4pes350d230-16-1



BORDER - Dj24218  
fasciael120h25 - 7-1





MATRESS PANEL - mo1646 KD145ZV  
993-17

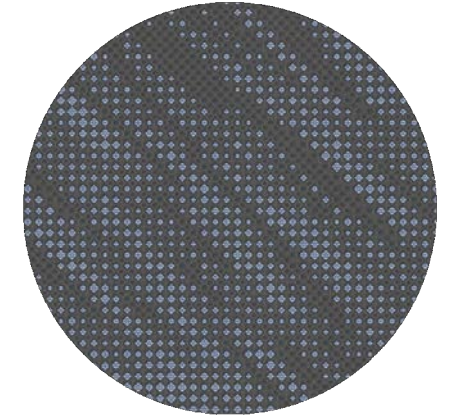
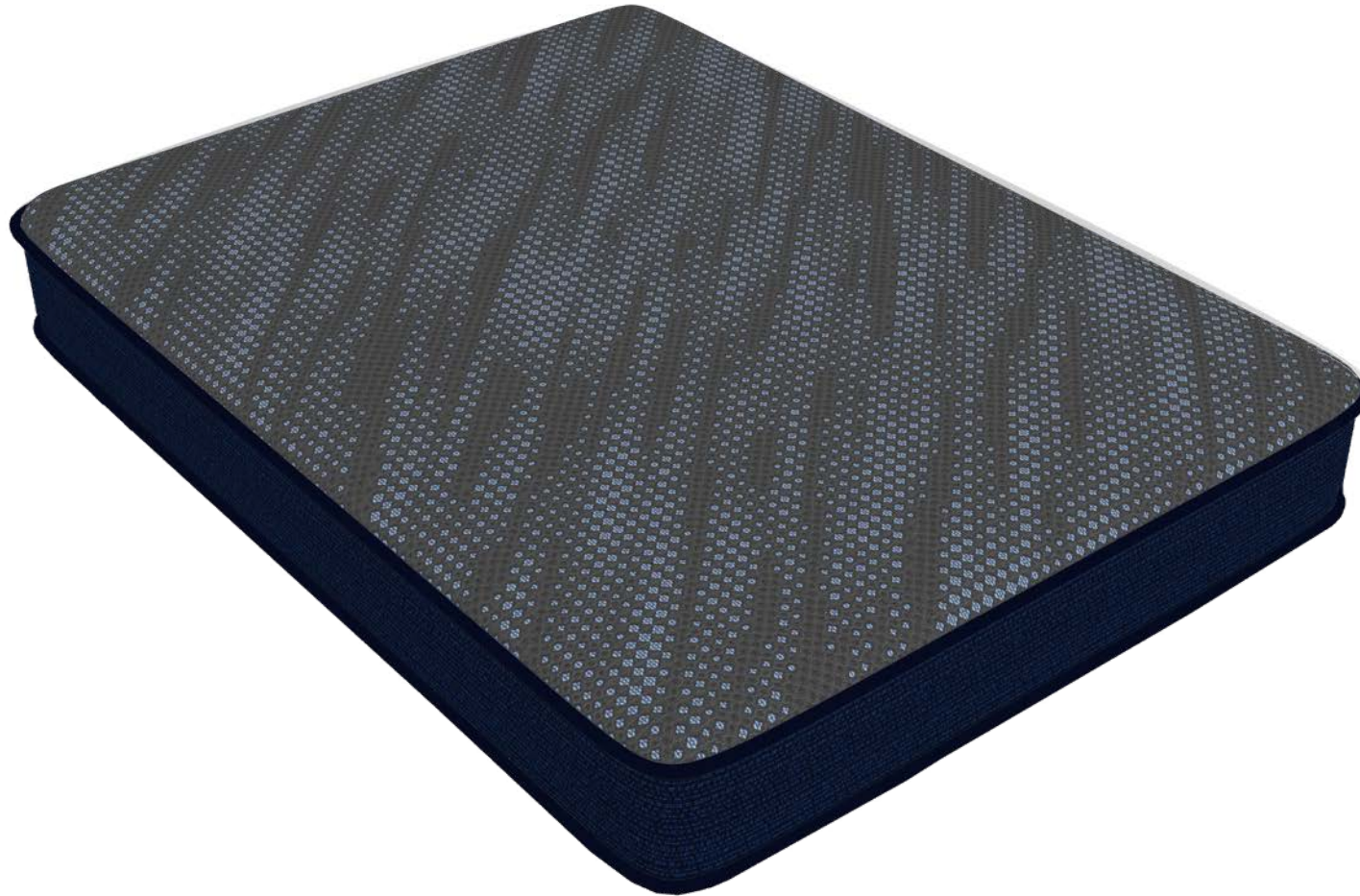


BORDER - us3161 LW54BCH  
999-19

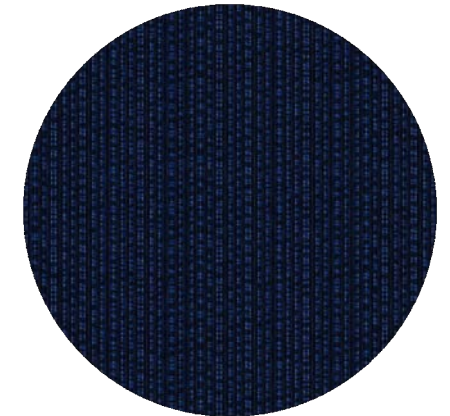


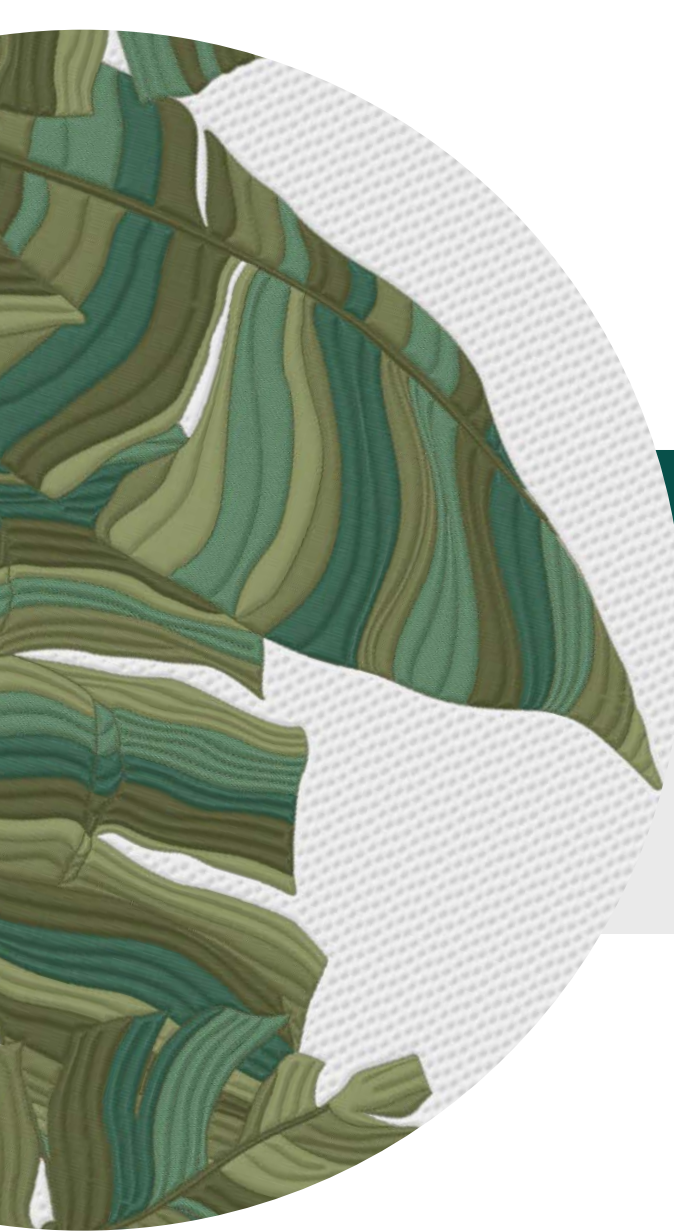


MATRESS PANEL - mo1663 M1V45L1D  
830-54



BORDER - us2632a Lynn  
995-60

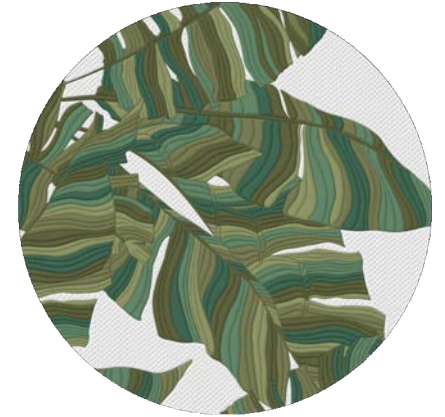
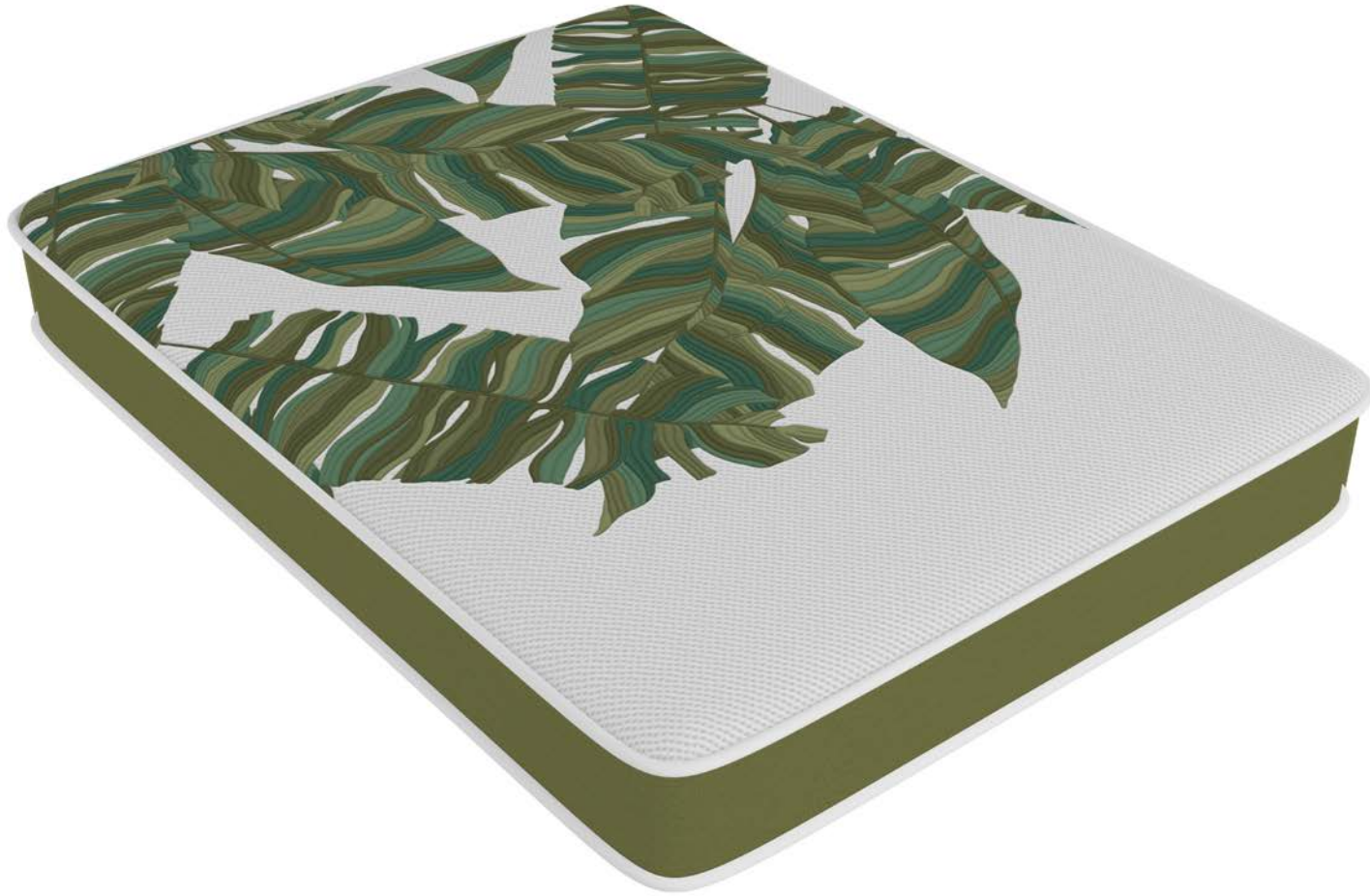




# Botanic combinations

Matching Mattress Panels and Borders  
with colourful fantasies

MATRESS PANEL - ue110 E4PedPe50a1  
987-67



BORDER - r83L MegBRP  
953-69





# The natural side

Qualities: Cotton, wool and Lyocell combined  
in soft fabrics for the perfect cozy home.

MATRESS PANEL - Ma10144  
pvl240c230 - 6-0



**STELLINI**  
Italian Style In Ticking Since 1947



**CT NASSAU**  
Tape, Jacquard And Stretch Ticking

[stellinigroup.com](http://stellinigroup.com)

[ctnassau.com](http://ctnassau.com)



# Cooling Fabrics

**FRECC! COOLING TOUCH**

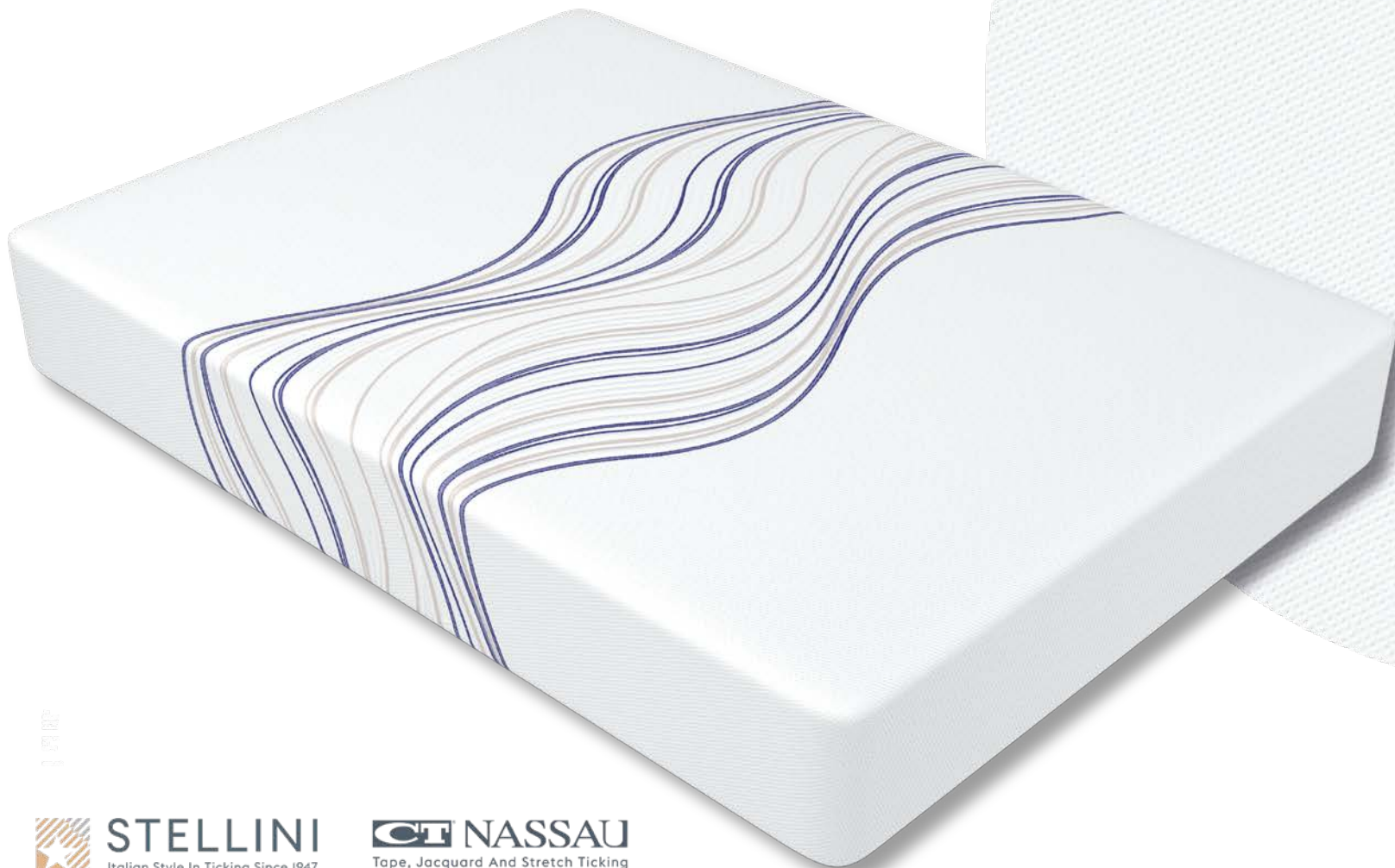
**DISCOVER  
MORE HERE:**



STELLINI  
***Frecc!***

MATRESS PANEL - mo1623 ZenHP35a21p

957-61



1 07 00



**STELLINI**  
Italian Style In Ticking Since 1947



**CT NASSAU**  
Tape, Jacquard And Stretch Ticking

# RiFAB

Our new RiFAB fabric series marks a significant step towards the conscious reuse of material resources in the fashion industry. By harnessing the potential of Cellulose Recovery from Worn-Out Clothes, we are transforming discarded textiles into high-quality materials for mattress fabrics. This innovative process not only redefines the concept of fashion sustainability, but also reimagines the future of bedding comfort. Join us on this journey of redefining possibilities and contributing to a more conscious and sustainable future.

**DISCOVER  
MORE HERE:**





MATRESS PANEL - Ma10145  
rifab400x220-4-6



00105

 **STELLINI**  
Italian Style In Ticking Since 1947

 **NASSAU**  
Tape, Jacquard And Stretch Ticking

# RiFAB



# Pillfree

## LOW PILLING, HIGH DEFINITION

- High Resistance to pilling
- HD Resolution - Better design definition
- Silky Touch
- Elastic, "Easy Fit"

**DISCOVER  
MORE HERE:**



**ALSO AVAILABLE AS:**



MATRESS PANEL - Ma10116  
pillfree0301 - 7-6



**STELLINI**  
Italian Style In Ticking Since 1947



**NASSAU**  
Tape, Jacquard And Stretch Ticking

**Pillfree**



# Restore to health

**RESTORE TECHNOLOGY**

**DISCOVER  
MORE HERE:**



***RESTORE***

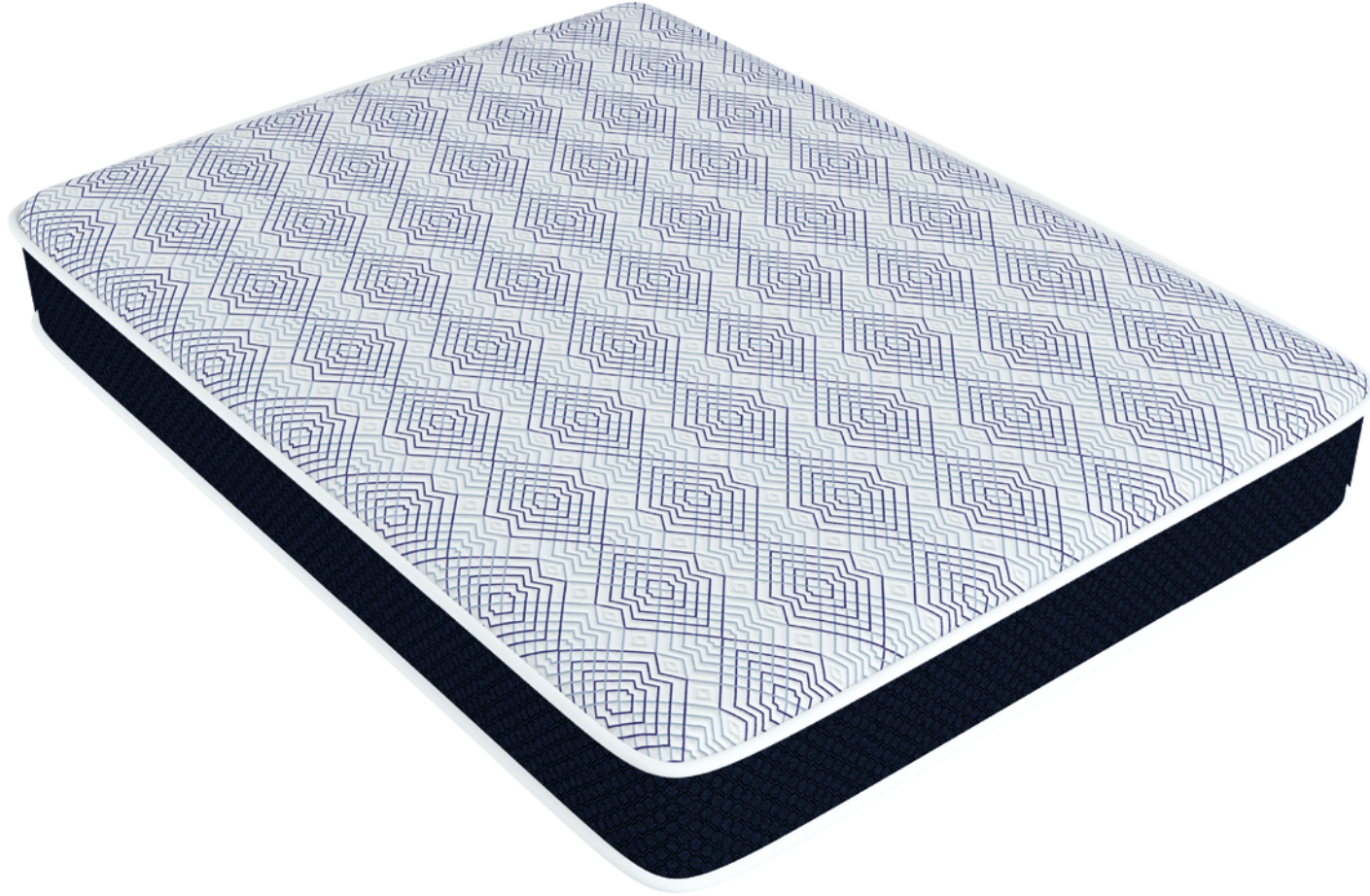
MATRESS PANEL - mo1585 CelliantD45XL1  
930-35



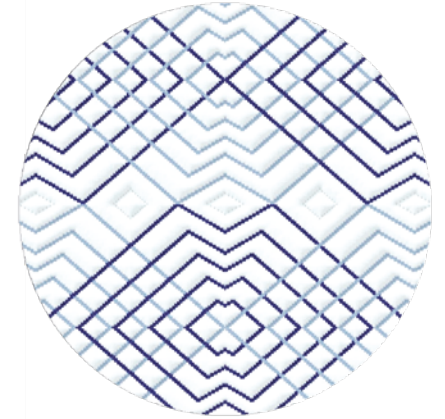


# Borders

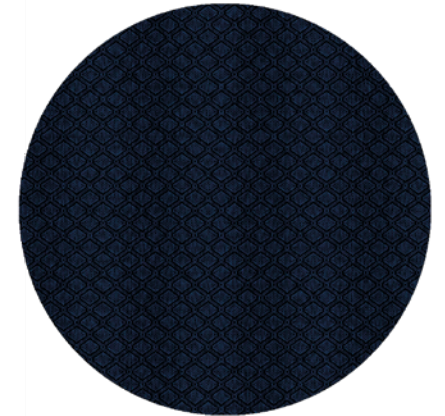
Jacquard Mattress Borders with  
geometrical combinations

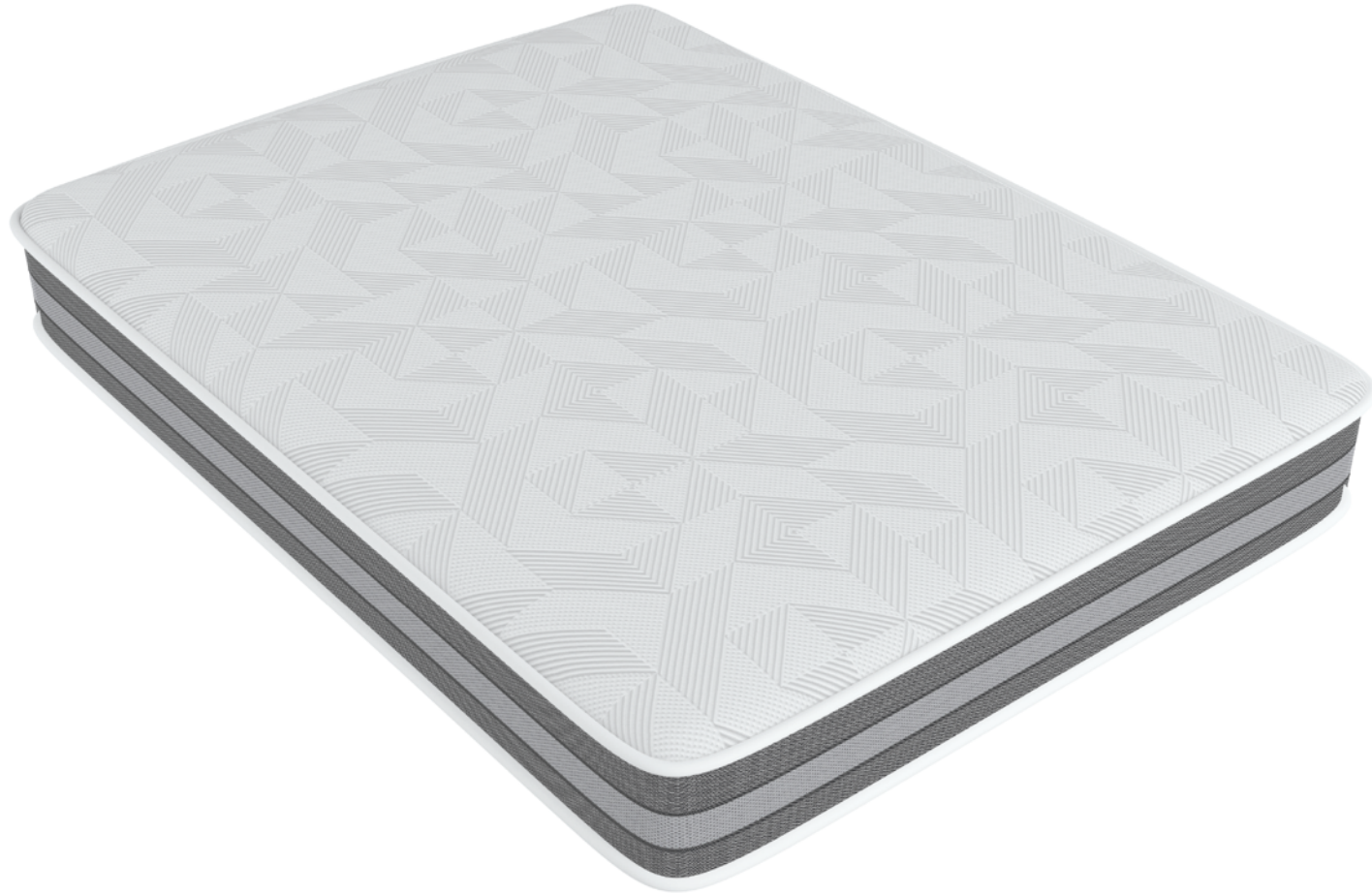


MATRESS PANEL - mo1328 Devon2  
822-61



BORDER - us2778a Lynn  
994-60

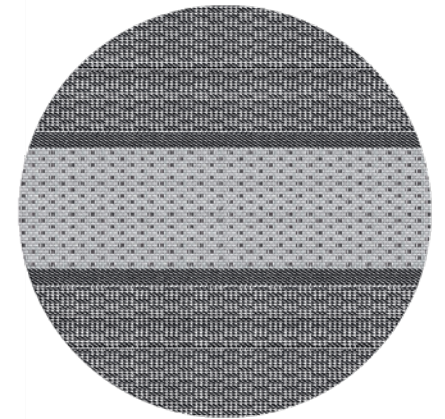




MATRESS PANEL - mo1572 BedfordT9  
841-0

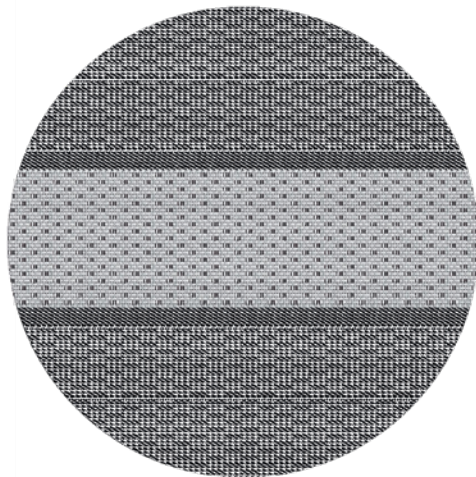


BORDER - Dj24214  
Fascia223h25-4-6

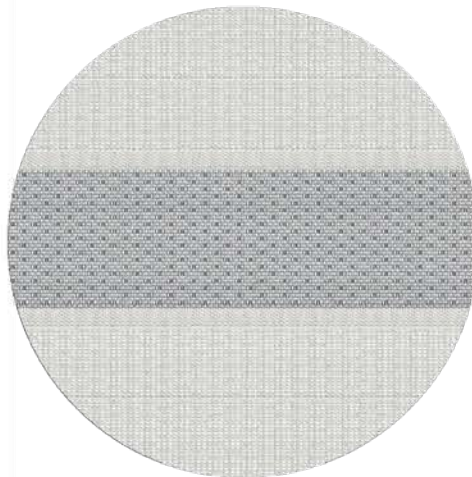




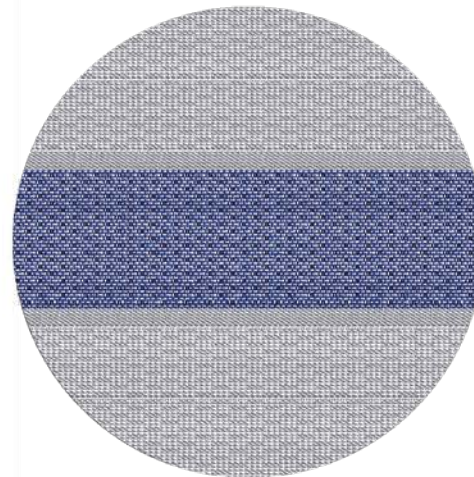
BORDER - Dj24214  
Fascia223h25-4-6



BORDER - Dj24214  
Fascia223h25-4-60



BORDER - Dj24214  
Fascia223h25-4-1



Natural  
Recycled  
Deve-  
lopments

# DISCOVER THE REST OF THE CATALOGUE

CONTACT US FOR  
MORE INFORMATION

Cooling  
Antipilling  
Technologies

# CONTACTS

USA  
Continental Ticking  
Corporation of America  
T +1 336 570 0091  
[salesmgt@ctnassau.com](mailto:salesmgt@ctnassau.com)

Europe | Italy | Yarn  
Stellini Tech Srl  
T +39 0331 072501  
[info@stellinigroup.com](mailto:info@stellinigroup.com)

Europe | Italy | Fabric  
Stellini Textile Srl  
T +39 0331 072501  
[info@stellinigroup.com](mailto:info@stellinigroup.com)

Russia  
Stellini.RU  
Outside RU: T +7 4932 57 48 24  
Inside RU: T 8 800 550 19 47  
[infoweb@stellinigroup.ru](mailto:infoweb@stellinigroup.ru)

[stellinigroup.com](http://stellinigroup.com) | [ctnassau.com](http://ctnassau.com)



[stellinigroup.com](http://stellinigroup.com) | [ctnassau.com](http://ctnassau.com)