

A SELECTION OF

Brera

COLLECTION

# Incanto

COLLECTION



STELLINI

Italian Style In Ticking Since 1947



WELCOME TO

# Incanto

COLLECTION

[stellinigroup.com](http://stellinigroup.com)

Copyright — ©Stellinigroup 2024  
All rights reserved. No part of this document may  
be reproduced without prior written permission.

# Incanto in Brera

Incanto is the enchantment for the little things in our everyday lives. With Incanto we are creating an idyllic environment in which life is fully experienced, immersing oneself in a sort of modern greenhouse: a restful hideaway for dedicating time to personal interests.



Summer bursts into the Brera district and our journey continues with new fabrics for mattresses and the home. The Incanto collection explores natural and sustainable qualities with a focus on the latest technical developments, creating a unique and cosy atmosphere in every room.

Precise geometries with a vintage feel meet the simplicity of sinuous, vibrant shapes. Three-dimensional plays of light in the new jacquard fabrics. The palette veers towards warmer, more vital colours, towards a new collection to be discovered.

**Incanto is a sub-collection of Stellini Group's Brera Collection. Discover our collection on [stellinigroup.com](https://stellinigroup.com)**

## **ABOUT THE INFLUENCES**

The Brera Collection pays homage to the 1970s Italian design sensibility, offering a fusion of vibrant hues and captivating patterns that defined the era. With a nod to the exuberant spirit of Milan's Brera District, known for its artistry and creativity, these fabrics invite you to embark on a journey through an era that celebrates both flair and sophistication.



**WATCH**  
Our video trailer here:



[stellinigroup.com](https://stellinigroup.com)  
[/Brera Incanto](#)

# PREVIEW

P6205H25FN3 2-1



RIFAB400H 2-2



PILLFREE0301 16-6



RIFAB400H220 3-6

TPEDYEL680B150



P5274 5-7

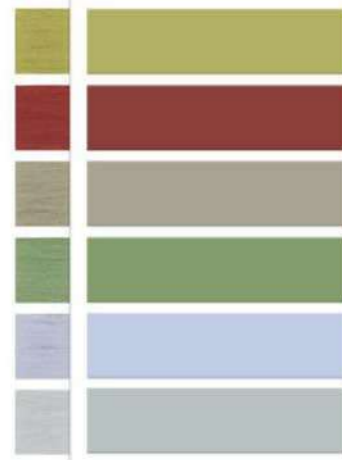


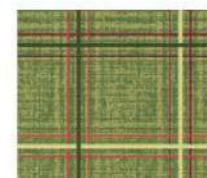
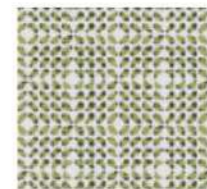
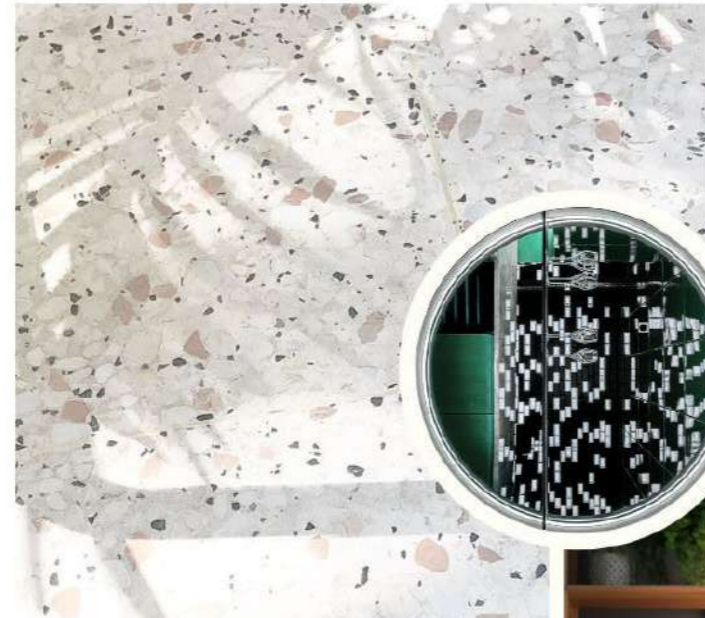
PESCV280B220 36-2



FASCIAEL130H25 26-6

## Incanto MOODBOARD





# Incanto

MOODBOARD



P6080DG 6-0



TPEDYEL680BN150 3-3



FASCIAEL130H25 28-7



P6206H25FN3



TPEDYEL680B150 4-0



TEMPEL350B230 3-2



TPEDYEL680B150 2-7



FASCIAEL130H25 27-6

# COLORS SELECTION

## KNIT

Dyed



## JACQUARD



Lucid



### KEY FOCUSES OF INCANTO SUB-COLLECTION

- EXPLORING FLOREAL DESIGNS
- GEOMETRIC VINTAGE GLAMOUR
- TECHNICAL DEVELOPMENTS

# Design Previews



Some simulation colors, design depth and details may vary from the original fabric. Please contact us for more info.

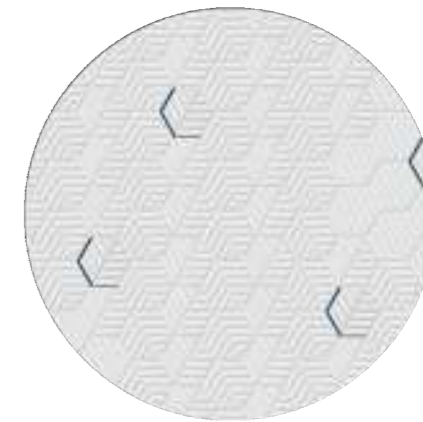


# Jacquard Borders

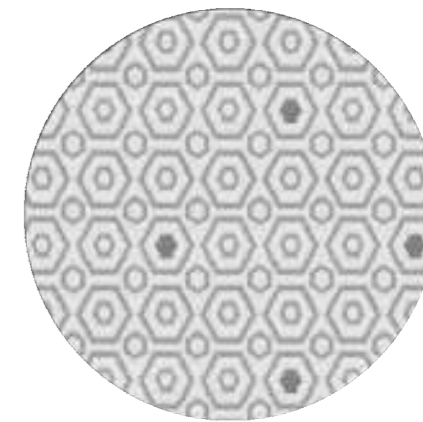
Jacquard Mattress Borders with geometrical combinations



MATRESS PANEL - Ma10316  
tempel350b230 - 5-1



BORDER - ds24315  
p6206h25fn3 - 6-6



 **STELLINI**  
Italian Style In Ticking Since 1947

 **NASSAU**  
Tape, Jacquard And Stretch Ticking





MATRESS PANEL - Dg24291  
p6080dg - 9-0



BORDER - Dj24312  
fasciae130h25 - 26-8



ctnassau.com

stellinigroup.com

BORDER - Dj24312  
fasciae130h25 - 26-6



BORDER - Dj24312  
fasciae130h25 - 26-8



BORDER - Dj24312  
fasciae130h25 - 26-61





MATRESS PANEL - Ma10337  
pl240b220 - 15-6



BORDER - Dw24305  
p6209h25fn3 - 1-1



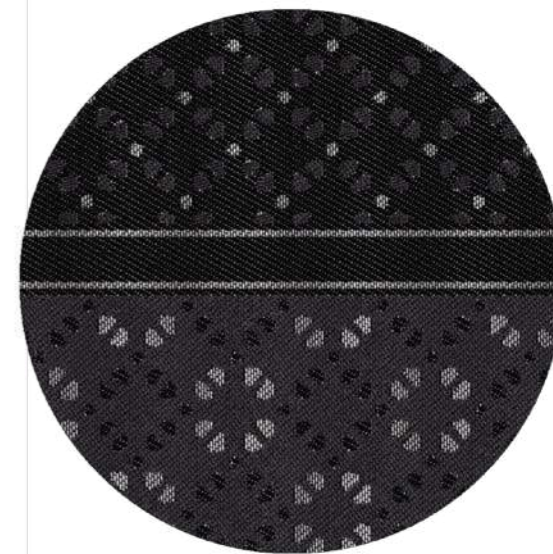
ctnassau.com

stellinigroup.com

BORDER - Dw24305  
p6209h25fn3 - 1-1



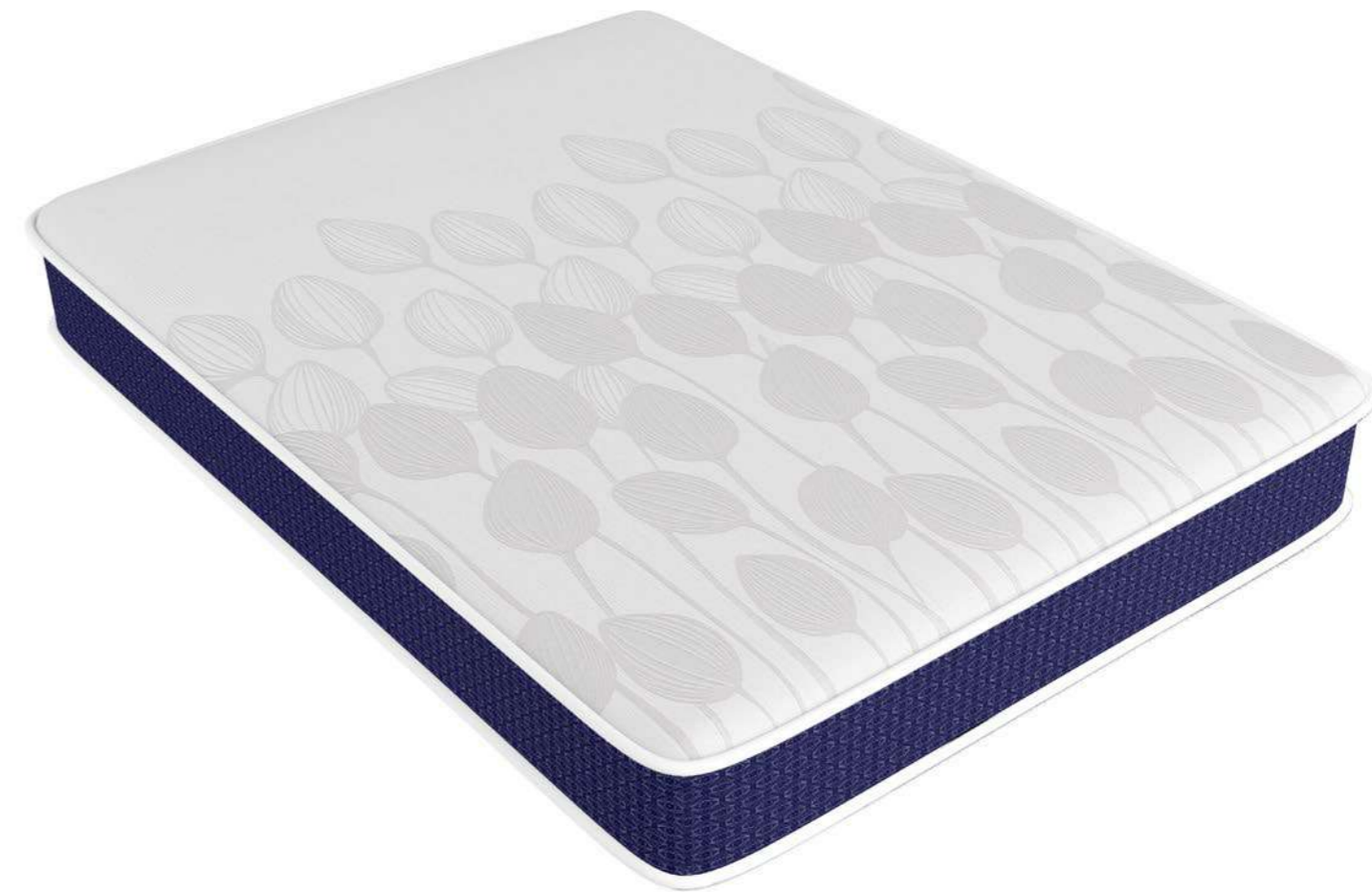
BORDER - Dw24305  
p6209h25fn3 - 1-6





# Knitted Borders

Knitted Mattress Borders with geometrical combinations



 **STELLINI**  
Italian Style In Ticking Since 1947

**CT NASSAU**  
Tape, Jacquard And Stretch Ticking

MATRESS PANEL - Dj24331  
p6007-6-0



BORDER - Ma10183  
pedy180c220-5-1





# Design District

## JACQUARD FABRICS



p6007 3-0



p6007 4-0



p6066dg 4-6

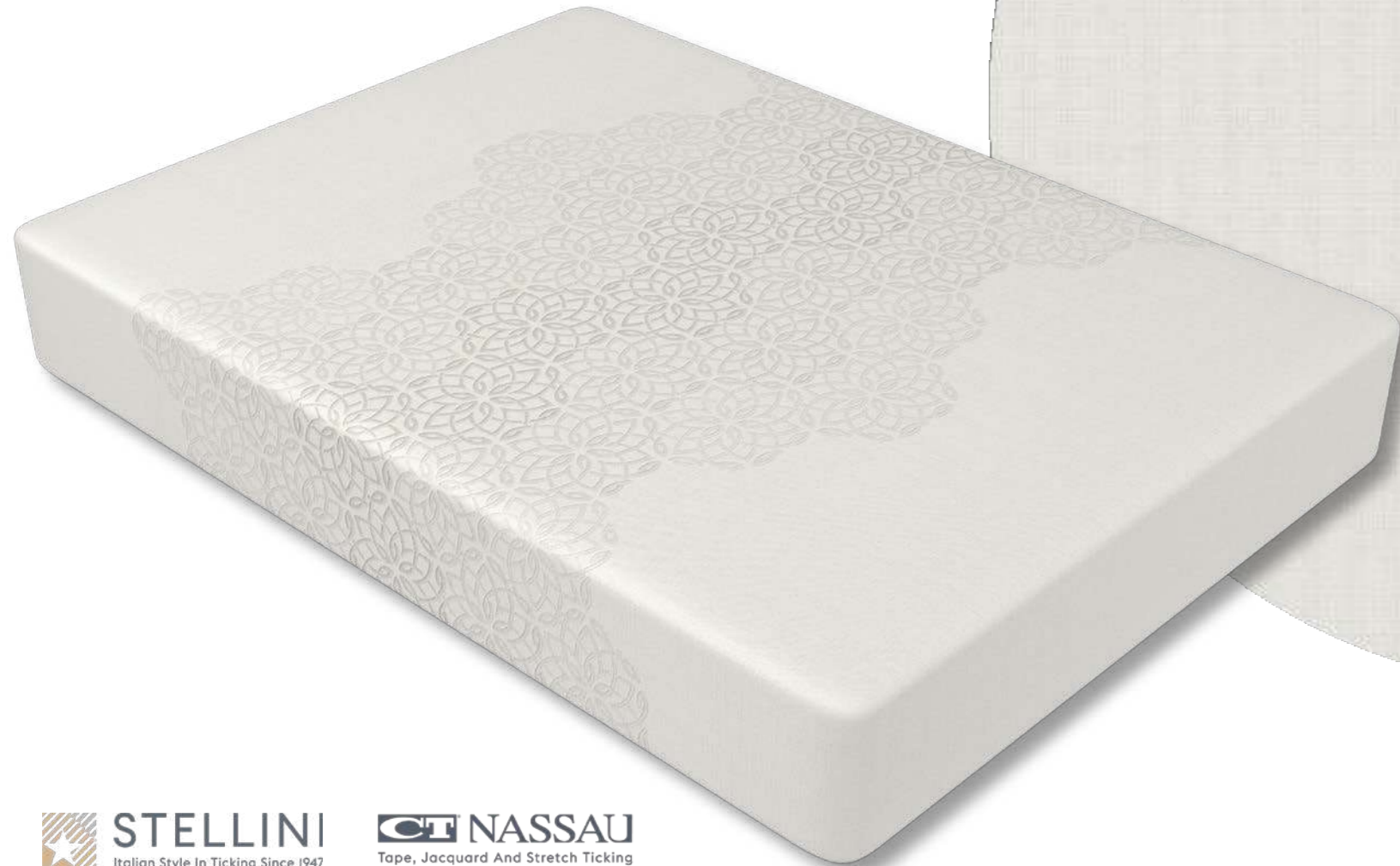


MATRESS PANEL - Dj24298

p5274 - 5-7

MATRESS PANEL - Dg24302

p5675-8-8



ALSO AVAILABLE IN:

- 5-5
- 3-6
- 5-6
- 3-61

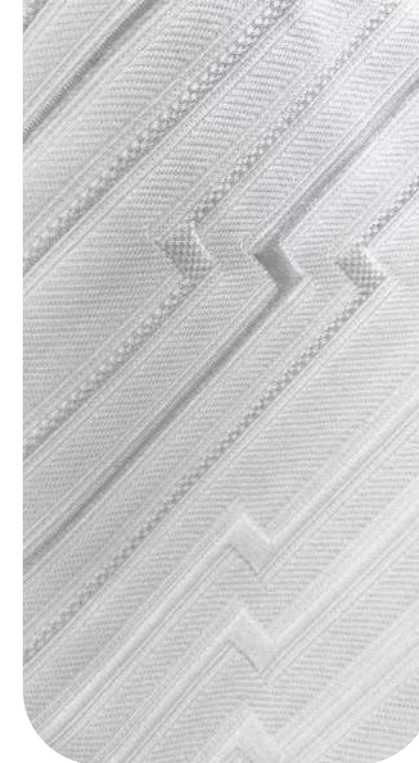


# Design District

## KNITTED FABRICS



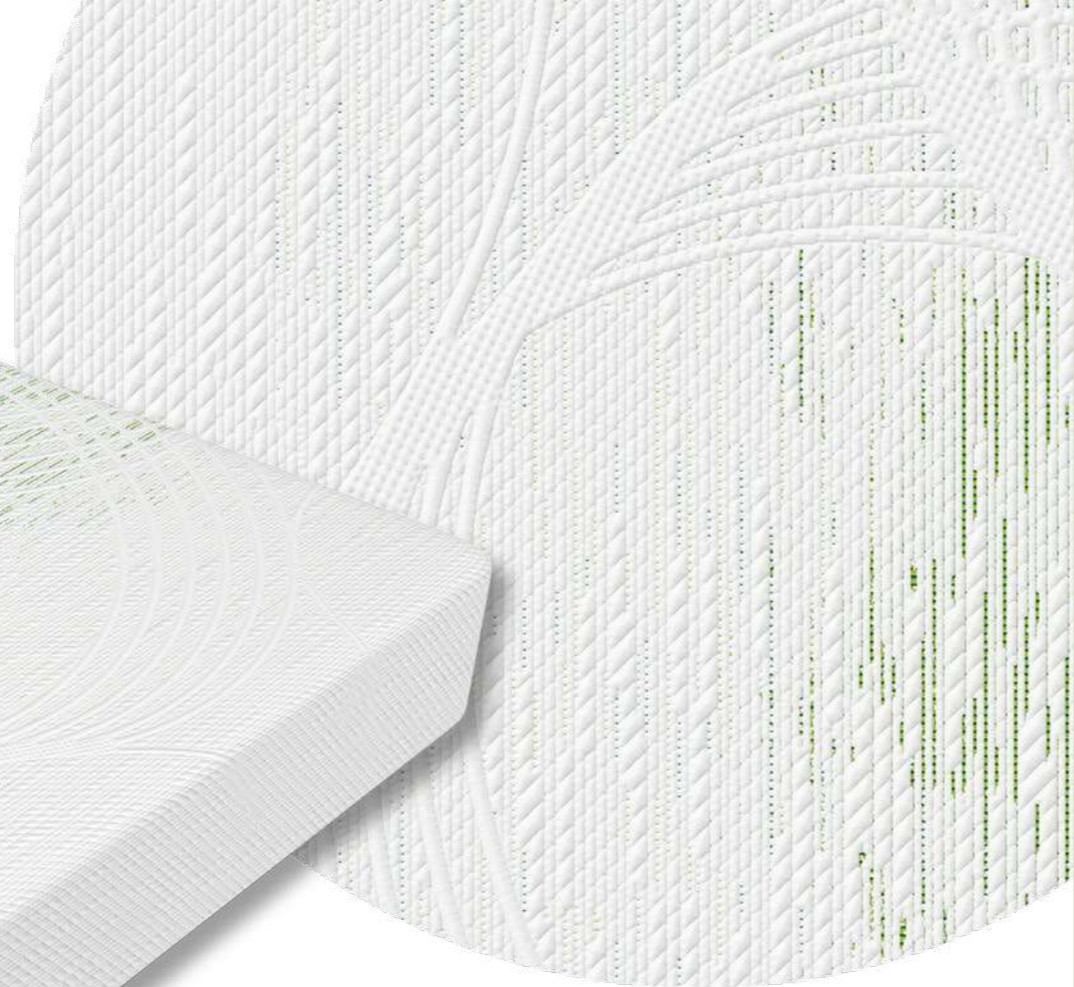
wk4pescv300b230 3-6



wk4pescv300b230 1-6



MATRESS PANEL - Ma10336  
pl240b220 - 14-30



ALSO AVAILABLE IN:  15-3  15-6  15-30



**STELLINI**  
Italian Style In Ticking Since 1947

**CT NASSAU**  
Tape, Jacquard And Stretch Ticking

MATRESS PANEL - Ma10239  
pescv280b220 - 37-3



ALSO AVAILABLE IN:  37-22



**STELLINI**  
Italian Style In Ticking Since 1947

**CT NASSAU**  
Tape, Jacquard And Stretch Ticking

MATRESS PANEL - Me10261  
e4pes350d230 - 19-61

MATRESS PANEL - Mx10237  
fpes500h220 - 32-2



STELLINI

**STELLINI**  
Italian Style In Ticking Since 1947

**CT NASSAU**  
Tape, Jacquard And Stretch Ticking

ALSO AVAILABLE IN:  19-6

STELLINI

**STELLINI**  
Italian Style In Ticking Since 1947

**CT NASSAU**  
Tape, Jacquard And Stretch Ticking

ALSO AVAILABLE IN:  17-3





# The natural side

Qualities: Cotton, wool and Lyocell combined in soft fabrics for the perfect cozy home.



ALSO AVAILABLE AS:  
FLAME RETARDANT,  
ORGANIC COTTON



fpesten400m220 1-5



cvcotsup350a230 34-0



woolpes500a220 5-0



MATRESS PANEL - Ma10312  
bamboo450b230 - 2-1



ALSO  
AVAILABLE IN:



2-3

STELLINI

**STELLINI**  
Italian Style In Ticking Since 1947

**CT NASSAU**  
Tape, Jacquard And Stretch Ticking

MATRESS PANEL - Ma10314  
bamboo450b230 - 4-3



ALSO  
AVAILABLE IN:



4-1

STELLINI

**STELLINI**  
Italian Style In Ticking Since 1947

**CT NASSAU**  
Tape, Jacquard And Stretch Ticking



# Cooling Fabrics

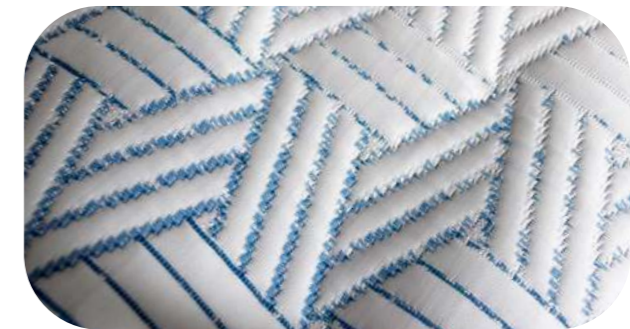
**FRECC! COOLING TOUCH**

DISCOVER MORE ON  
[CTNASSAU.COM/SPECIAL\\_FABRICS](http://CTNASSAU.COM/SPECIAL_FABRICS)

STELLINI  
**Frecc!**



ftemp350m220 1-60



ftemp350m220 3-1



MATRESS PANEL - Ma10316  
tempel350b230 - 5-1



**STELLINI**  
Italian Style In Ticking Since 1947

**CT NASSAU**  
Tape, Jacquard And Stretch Ticking

ALSO AVAILABLE IN: ●  
5-6

STELLINI  
**Frecc!**

MATRESS PANEL - Ma10315  
tempel350b230 - 4-61



**STELLINI**  
Italian Style In Ticking Since 1947

**CT NASSAU**  
Tape, Jacquard And Stretch Ticking

ALSO AVAILABLE IN: ●  
4-6

STELLINI  
**Frecc!**

# RiFAB

Our new RiFAB fabric series marks a significant step towards the conscious reuse of material resources in the fashion industry. By harnessing the potential of Cellulose Recovery from Worn-Out Clothes, we are transforming discarded textiles into high-quality materials for mattress fabrics. This innovative process not only redefines the concept of fashion sustainability, but also reimagines the future of bedding comfort. Join us on this journey of redefining possibilities and contributing to a more conscious and sustainable future.

DISCOVER MORE ON  
[STELLINIGROUP.RU/SPECIAL FABRICS](https://stellinigroup.ru/special-fabrics)



rifab400x220 3-6



rifab350x230 1-7



rifab400x220 2-7



MATRESS PANEL - Ma10255  
rifab400x220-6-7



ALSO AVAILABLE IN:    
6-2 6-6

RiFAB



MATRESS PANEL - Ma10238  
rifab400x220 - 8-20



ALSO AVAILABLE IN:   
8-6

RiFAB





# Pillfree

## LOW PILLING, HIGH DEFINITION

- High Resistance to pilling
- HD Resolution - Better design definition
- Silky Touch
- Elastic, "Easy Fit"

ALSO AVAILABLE AS:



pillfree301 3-4



pillfree0300 2-0



pillfree0304 1-2



Example of pilling

MATRESS PANEL - Ma10226  
pillfree0301 - 12-6



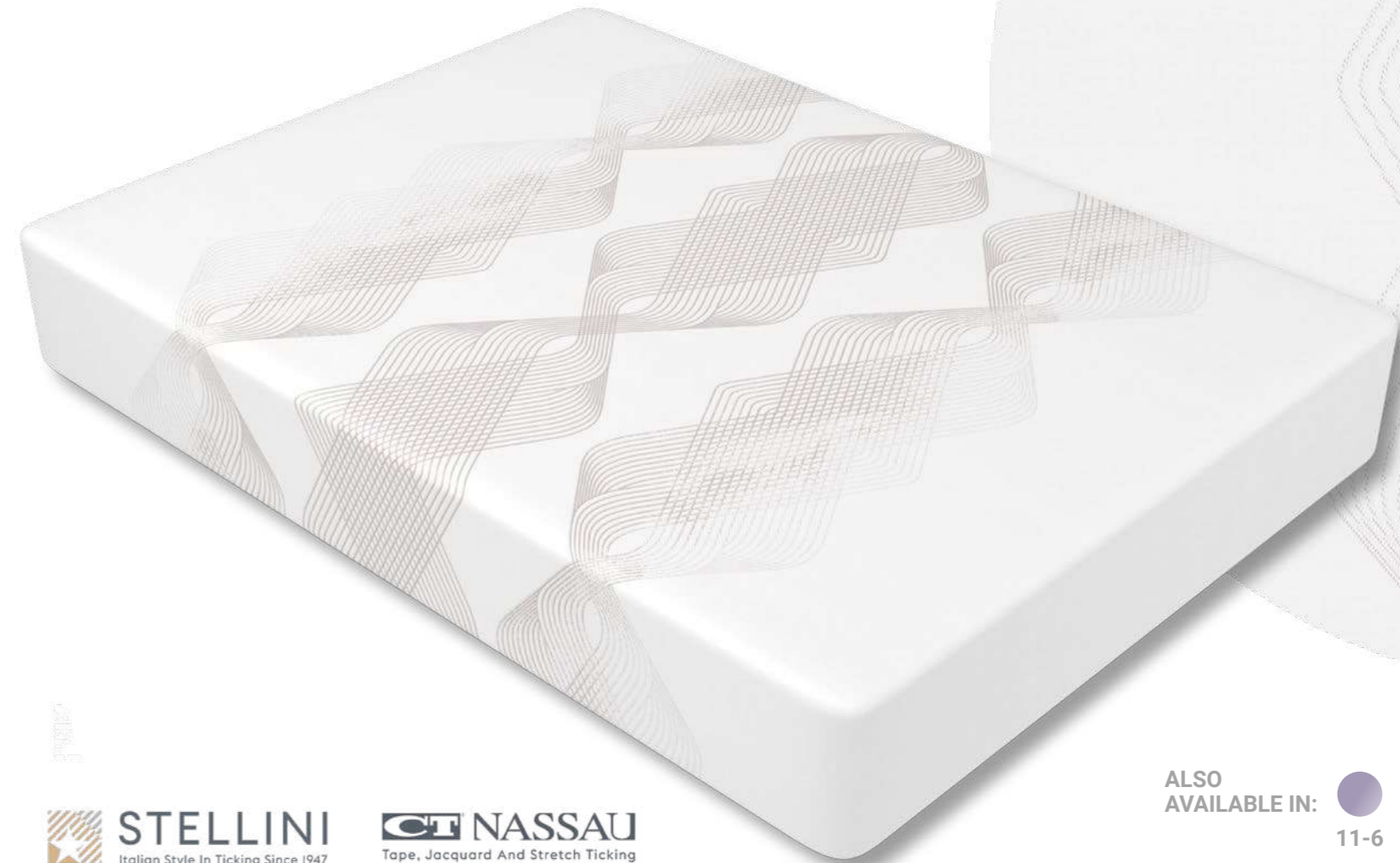
**STELLINI**  
Italian Style In Ticking Since 1947

**CT NASSAU**  
Tape, Jacquard And Stretch Ticking

ALSO AVAILABLE IN:  12-61

**Pillfree**

MATRESS PANEL - Ma10225  
pillfree0301 - 11-61



**STELLINI**  
Italian Style In Ticking Since 1947

**CT NASSAU**  
Tape, Jacquard And Stretch Ticking

ALSO AVAILABLE IN:  11-6

**Pillfree**



Natural  
Recycled  
Deve-  
lopments

Cooling  
Antipilling  
Technologies

# DISCOVER THE REST OF THE CATALOGUE

CONTACT US FOR  
MORE INFORMATION

## CONTACTS

Europe | Italy | Fabric  
Stellini Textile Srl  
T +39 0331 072501  
info@stellinigroup.com

Europe | Italy | Yarn  
Stellini Tech Srl  
T +39 0331 072501  
info@stellinigroup.com

USA  
Continental Ticking  
Corporation of America  
T +1 336 570 0091  
salesmgt@ctnassau.com

Russia  
Stellini.RU  
Outside RU: T +7 4932 57 48 24  
Inside RU: T 8 800 550 19 47  
infoweb@stellinigroup.ru

[stellinigroup.com](http://stellinigroup.com)



Natural  
Recycled  
Deve-  
lopments

Brera  
Retro'  
Futurism  
Geometric  
Vintage

Cooling  
Antipilling  
Technologies